



Cellular Ultrasonic Device SIM Card Replacement Instruction

1. Purpose

1.1. This instruction defines the guidelines in opening and closing Tekelek GSM & LTE devices for SIM card placement/replacement.

2. References

2.1. Screws x 4: NO.4 x 3/4" SS PAN POZI" Self Tapping

2.2. Battery x 4: VARTA Power 1 C Cell Battery

2.3. O-Ring: 82,50 x 2,20 Silicone Rusty Red O-Ring (30 Shore)

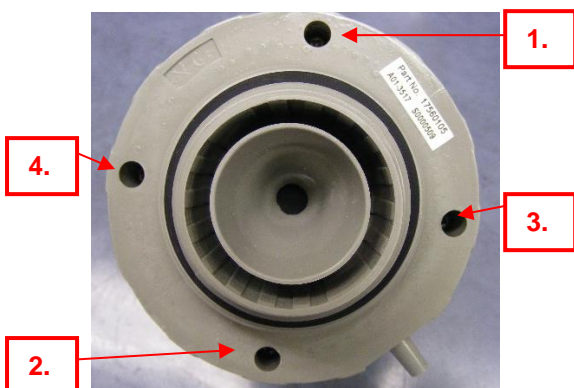
2.4. SIM card

3. Guidelines

3.1. Turn unit over and remove void if removed sticker from base of unit.



3.2. Untighten 4 screws from base in a diagonal sequence.

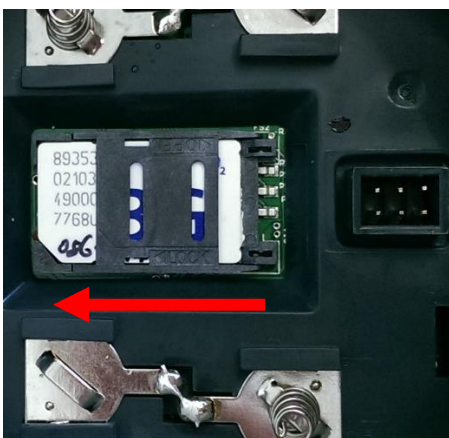
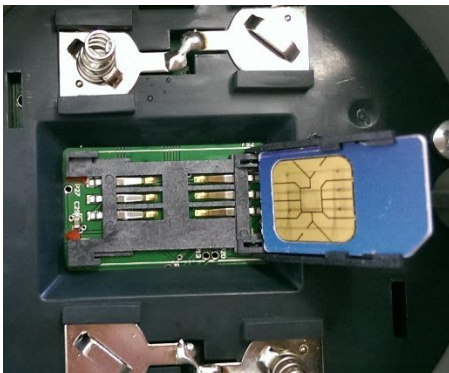
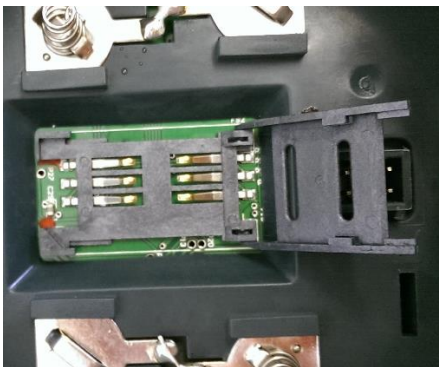
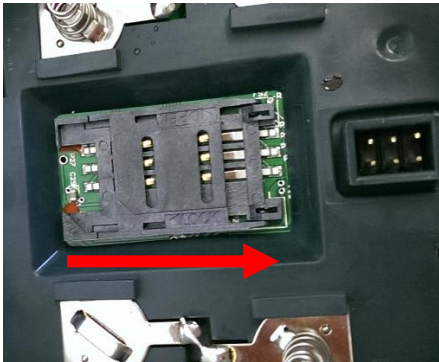


Gap created once screws have been loosened.

3.3. Remove screws fully from base.

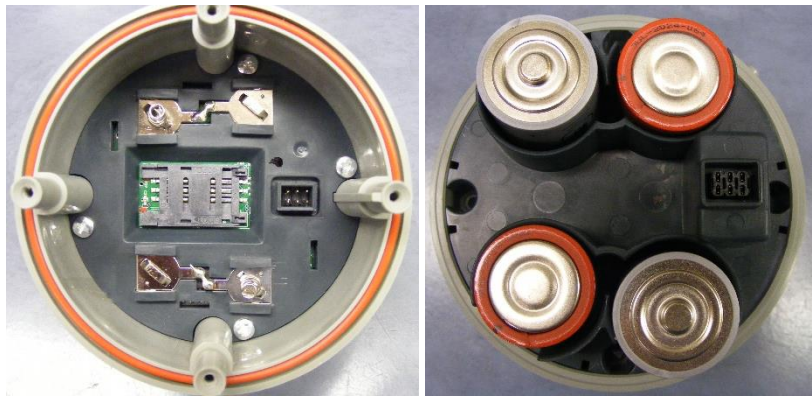
3.4. Standing the unit in the upright position, to prevent batteries from falling out, separate top and bottom plastics.

- 3.5.** Slide SIM card door backward towards hinges and lift door to open SIM card holder. Remove existing SIM card if applicable. Slide new SIM card into holder observing polarity, close door and slide forward to secure SIM card.



3.6. Remove old O-ring, if required.

3.7. Place new O-ring, or existing O-ring, on top plastic ensuring O-ring is seated correctly in groove.



3.8. Mate top and bottom plastics taking care not to damage connectors.

Note: The 4 legs of the top plastic will only mate with the holes of the bottom plastic in a certain order. Notched leg – Notched hole. This ensures that the connectors are aligned upon mating.



3.9. Inspect O-ring is still seated correctly.

3.10. Secure plastics using 4 screws in the following sequence:

3.10.1. Place diagonal screws and tighten initially to $2.5 \pm 0.3 \text{ kgf.cm}$

3.10.2. Again, using diagonal screws, final torque all screws to $7.0 \pm 0.3 \text{ kgf.cm}$

3.11. Once secure, inspect the seal between the plastics to ensure it has been closed correctly and that the O-ring has not been caught between the plastics. Once closed correctly there should be a consistent gap of 0.5mm around the full circumference of the unit.

