



Cellular Logger Device Battery Replacement Instruction

1. Purpose

1.1. This instruction defines the guidelines in opening and closing Tekelek GSM & LTE Logger devices for battery replacement.

2. References:

2.1. O-Ring: 82,50 x 2,20 Silicone Rusty Red O-Ring (30 Shore)

3. Guidelines

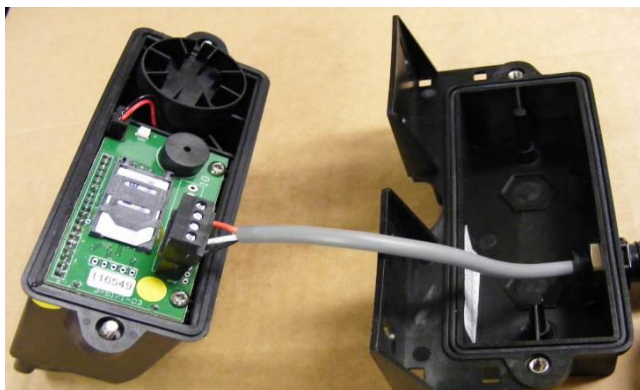
3.1. Remove void if removed sticker from base of unit.



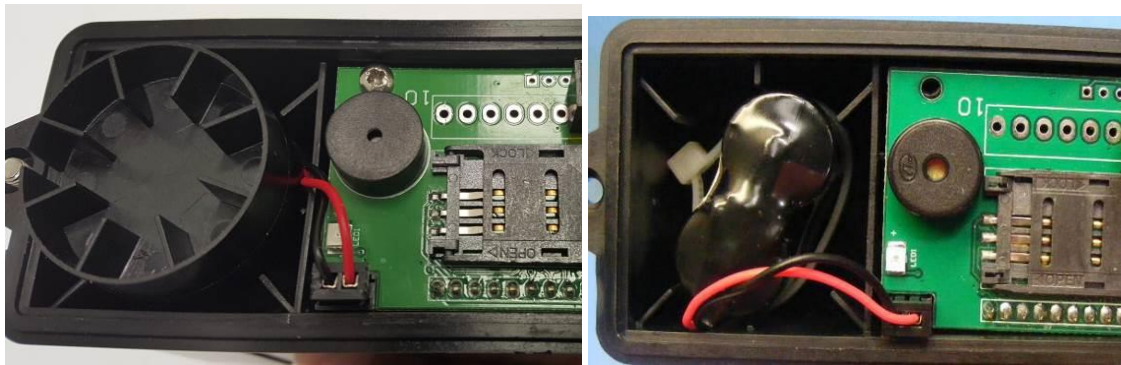
3.2. Untighten and remove 2 HEX screws.



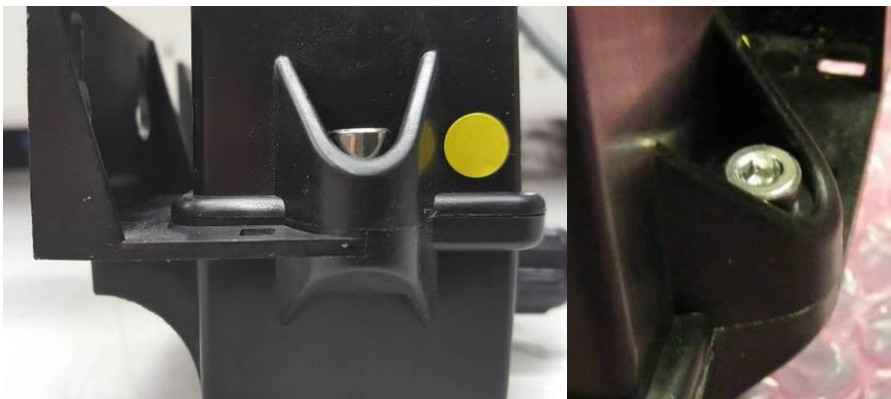
3.3. Separate top and bottom plastics.



- 3.4.** Remove existing battery, replace with new battery ensuring battery connector is wired correctly and inserted into header on the PCB.



- 3.5.** Where necessary, remove old O-ring and replace with a new O-ring.
- 3.6.** Ensure O-ring is seated correctly.
- 3.7.** Mate top and bottom plastics and secure using 2 HEX screws torqued to 2Nm.



- 4.** Sending command R3=ACTIVE,R6=FA,0,R1=80 from the server to UUT will activate unit, clear battery counter and shut down UUT.